



THE CHIMES

Monthly Newsletter of Community Presbyterian Church

APRIL 2008

Community Presbyterian Church, 32202 Del Obispo Street, San Juan Capistrano, CA 92675

SERVING THE LORD SINCE 1919 ”

(949) 493-1502

FAX (949) 493-4215

www.sjcpres.com

office@sjcpres.net

A Season for Growth

The beauty of the earth is in the growing season. Our hills are green, flowers abundant and pine trees are sprouting chartreuse limbs.

CPC has been a place for growth for over 90 years! In September 1916, our roots were planted in a Sunday School. Much growth has occurred since then. The most important growth is in the individual - growth in spirituality, understanding the Word of God, relating with each other.



This growth comes when we get involved in church activities. Children get involved in Sunday School to learn. Teens grow through interaction with their peers. Adults grow through worship & study. We grow when we share our talents - our God-given gifts.

1 Corinthians 12: 4-6 Now there are varieties of gifts, but the same Spirit; and there are varieties of service, but the same Lord; and there are varieties of working, but it is the same God who inspires them all in every one.

Normally when we think a person with talent, it is in the area of art, music, or theater. God has given us many talents – hospitality, leadership, cooking, painting, cleaning, teaching, decorating, gardening, understanding balance sheets, sewing, fixing things, reaching out to others in loving concern, helping with technology. Our children have the wonderful talent of reminding us about loving with an open heart and a big hug!

God calls us to be good stewards of our talents. Our church is a welcoming place to share your talents. It is also a great place to learn a new talent! When each person shares their talents, we learn from each other.

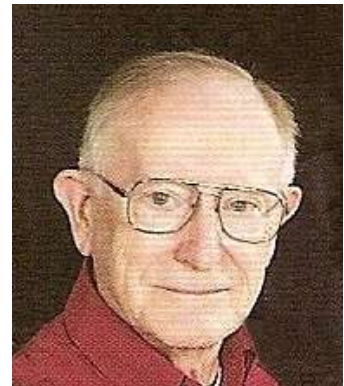
Spring into action! Take this season of growth to call a member of Session and volunteer your talents. Come grow with us! We will all be blessed.

The Stewardship Committee

For March Calendar list of events see page 9

Session Report

Al Jessen, Clerk of Session



There were two special Saturday retreats for Session, held at the Presbyterian Church of the Master on Feb 23 and at the Pastor's home on Mar 15. These retreats were led by Elder Paul Larson after Pastor Morgan opened each retreat with prayer. Eleven elders met in the morning of Feb 23, taking part in an exercise designed to make us aware of various ways different people think and evaluate situations, based on individual personality traits. Following a simple but satisfying lunch, the remainder of the meeting was a discussion of "Standing Rules of Session" and "What Requires Session Approval." The Mar 15 afternoon meeting was attended by 9 elders who discussed which burning issues should be the subject of future discernment meetings of Session. The consensus was that Worship should be the topic of the special meeting which is scheduled from 7 to 9 pm on April 1 in the CE room at CPC. Session will consider "Is our worship experience consistent with our stated Vision and Initiatives? Are we on track? "

Ten elders met with Moderator Morgan Murray for a Regular Meeting of Session on March 18. Christina Smith, Preschool Director, gave a brief report on Preschool status. Failure to maintain full enrollment is having an impact on current income. Preschool fall pre-enrollment was excellent for morning classes, but disappointing for afternoon classes and it may become necessary to drop one afternoon class. It was reported that all other private preschools are having the same enrollment problem, largely due to the opening of publicly-funded preschools and the changing economy.

John Lea, a candidate for the position of CPC Family Resource Coordinator, appeared before Session as a guest to tell elders what he is able to do to help CPC and to answer questions. He is currently the leader two non-denominational churches. More candidates are being sought by advertising the position.

A brief report was given by the Stewardship Committee. For two months of 2008, pledged contributions were: prepaid \$27,046; yearly \$47,212; regular \$47,212; and total \$83,758. Unpledged contributions total \$2,371. Thus far, contributed income is below the approved budget estimate by \$7,325. John Turner is coming to CPC for a meeting with the Stewardship & Endowment Committees on Mar 25 to discuss a Legacy/Endowment campaign.

The Pastor's report announced a foot-washing ritual during the Maundy Thursday service on Mar 20. He requested time off for a vacation from April 6 through April 12. In his absence, Mike Bautista will preach and Rev. Schwenck and Rev. Elliott will serve communion on Sunday, April 6. Session approved the Pastor's vacation schedule. The Pastor led a Bible study of *Ruth 2* with PW Circle leaders. The Pastor, with Deacon Barbara Ferguson assisting, served home communion to Vern Tucker, Vera Mansfield, Trudy Emerson, Paul & Honey Cassady, Mildred Seapy and her friends Cicille and Nancy on March 5. In response to a letter from a member to the Pastor, Session discussed the music program.

(Continued on page 3)

(Continued from Page 2)

The February 29 CPC Financial Statement shows General Fund income was \$6,876 more than expenses for two months of 2008. The Finance Committee announced that the 2008 approved Preschool Budget contains significant errors which should receive immediate attention.

Session approved two off-campus activities for the Youth Group in April. Session voted to move all responsibilities for member support to the Deacons since they are already doing a majority of them. Session approved use of Fellowship Hall by *Habitat for Humanity* for a recognition breakfast on April 27 and for monthly training programs on selected Tuesday evenings in April through December. Session approved use of Fellowship Hall, the Kitchen and Sue's Porch on Thursday, May 15 to hold the annual barbeque for the AA Men's Group. Session approved changing the Policy for Paid Time Off for the Preschool staff and added Veteran's Day as a paid holiday for the church staff.

Session was notified that Gregory Reid and Don & Julie Boyd transferred their church membership from CPC to the Laguna Niguel PC last month. CPC rolls now contain 201 Active Members and 27 Inactive Members after removing them, and Jim Forquer and Bobby Evinger, recently deceased.

Communion was served to 104 persons in the first service on Mar 2. A count for the second service was not recorded

Thank You from the Worship Committee

A heart-felt thank you to everyone who helped assemble our traditional Easter flower cross on Saturday, March 22. Once again it can be said, "This year was the most beautiful cross ever. "

Thank you also to everyone who shared flowers from their gardens. It was a challenge to gather enough flowers this year since Easter came so early, but we did it!

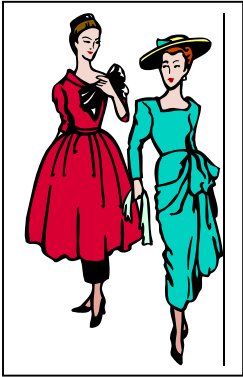
Terri Treemarcki-Beck
Worship Committee



Thank You from Jane McWilliams

My family and I have tried to find words to express our appreciation to the members who attended Jack's memorial service last Saturday [March 8]. The cards, calls, flowers were especially heart-warming as well as the Deacons who provided much-needed sustenance for our bodies. We wish we could give you all a big hug for your support for our family. God bless you.

Jane, John, Ronnie and Jill



Presbyterian Women
will host a
Luncheon & Fashion Show

for all mothers and daughters, nieces, grandmothers, granddaughters, and good friends

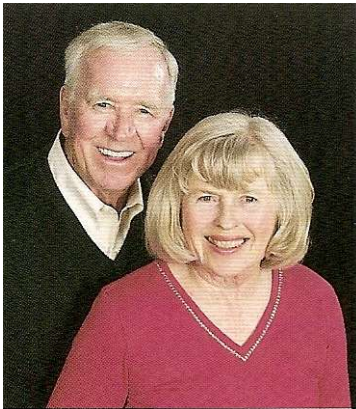
Saturday, May 10, 2008
Fellowship Hall – 11:00
Catered Luncheon - \$15.00

The latest fashions from **Coldwater Creek** will be modeled by members of the congregation. This is the time to invite your friends and neighbors to enjoy this fun filled event that is becoming a tradition.

The Birthday Offering will be received at this gathering.

Tickets for the Luncheon/Fashion Show will
be sold on the patio beginning April 20.

Questions: Contact Margaret Strong 496.2991 Lstrong@cox.net



OUTREACH MINISTRIES
From Larry Strong

Under the leadership of the Congregational Care Committee, our mission is to remain in constant contact with our existing members and potential new members. The committee is responsible for welcoming new members into the Church body. We also develop and execute creative membership campaigns consistent with the standards of the Church and its members. We invite you to join us designing, implementing and coordinating productive and meaningful programs to fulfill our mission.

This is the first in a series of articles providing an overview of our activities and responsibilities. Here is a plan you can follow with guests, beginning with their first visit and continuing as they return.

Committee Preparation:

- Develop a brochure or information packet to be handed to first-time visitors to our worship service.
- Receive the names and addresses of these visitors using a registration card in the information packet. (With a little encouragement from our Pastor most visitors will complete this registration form and place it in the offering plate).
- Train a group of church members to be responsible for making all first time visitors feel welcome.
- Recruit and train a group of members willing to occasionally host newcomers.

(Continued to page 5)

(Continued from page 4)

Strategic Steps:

- On first visit, the Greeters, Ushers and Pastor welcome visitors, provide informational literature and obtain their names and addresses.
- After the first visit, the Pastor sends a brief letter of appreciation and invitation to return.
- On the second and third visits, trained members introduce them to other members of the congregation.
- After the fourth visit, the Pastor will visit newcomers in their homes to encourage their continued participation, explain our church activities and the helpful ways to indicate our desire for them to feel like they belong and provide a copy of the Church Directory.
- After the eighth week, a Deacon Representative will contact the newcomers to explain the congregation's Care Giving Network and offer to assist them in taking advantage of our network. They will also be informed that they may receive support and care without the commitment of regular meetings.
- During the fourth month, two or three hosts will invite the newcomers into their home or to a restaurant for a shared meal.



Dos and Don'ts

- DO - Remember that the responses to each follow-up will vary, especially between transferees and un-churched persons. Un-churched persons may want to move through the steps more slowly.
- DO - Encourage hosts to keep the food simple and to focus on caring for people.
- DON'T - Call ahead before making the follow-up visits. Rather, go to homes at convenient times and limit visits to no longer than 15 minutes.
- DON'T - Use these follow-up visits for extensive fellowship and evangelistic discussions unless there is a very clear opening presented by the person being visited. The purpose is to express appreciation for their attendance and to encourage them to come again.

Resources Needed:

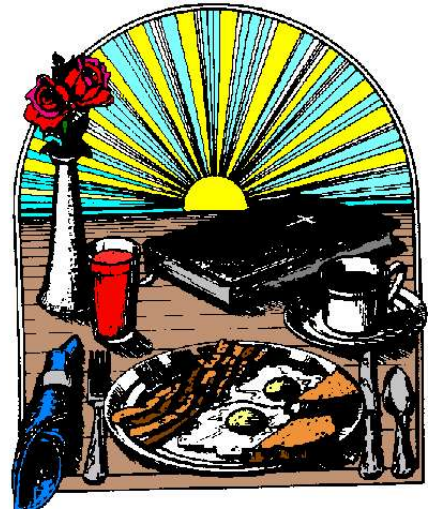
- People with good organizational skills to coordinate the various volunteers of our ministry.
- People with a real desire to welcome others to Christ and the church, willing to share personal experiences and provide printed materials such as *The Chimes* and other informational that might be helpful.

If you are interested in joining a vibrant and exciting ministry team, please call Larry Strong at (949) 496-2991. May God bless you!

In May, we'll give you ideas for inviting new people to worship and making them feel at home in our congregation.

Saturday Morning Group

Greetings from the Saturday morning devotional group. Normally we enjoy a wonderful breakfast from 8 to 8:30 and then move into a discussion until 9:30 of the previous week's devotional material from *The Upper Room*. This last Saturday we took just one of the devotional scriptures, Psalm 111:10 and discussed it, after we tried to write this famous quote in our own words. The sharing was magic as heart unfolded to heart and the Holy Spirit taught us. Here are a few of the written responses:



The scripture goes: *“The fear of the Lord is the beginning of wisdom; All those who practice it have a good understanding.”*

When we rewrote the passage we tried not to use the original important words so that we were forced to let our own experience inform our insights.

- “Everybody who puts God first in his/her life has a solid foundation for living.”
- “All who are in awe of God and place following him first before all else will benefit and have a good life.”
- “Being in awe of God brings us into a position of desiring to strengthen our beliefs and act as God would want us to.”
- “The awesome appreciation of the Lord is the sprouting seed of enlightenment, insight, and conscious awareness.”
- “The experience of the Lord is a start for us to be involved in God’s work in our world and in our life. If we can begin this we will have a view of this world and our place in it.”
- “Smart people revere God. His works are so awesome as to defy human comprehension. Even so, as we pray and read and think about our maker we can only grow in love as we contemplate his glory.”
- “Because God is always within me, I don’t just believe, I can know.”
- “Study all that God has done and is doing. Praise God and act accordingly.”
- “When we are not in his grace we become detached from his destiny for our lives.”
- “You will only know God when you experience his love and his joy when you are faithful and his concern when you stray.”
- “The fear of the Lord is knowledge. Those who study his words follow in his practices.”

All our friends and neighbors are invited to this gourmet breakfast and rich discussion. Check the website for meeting dates.

PPHHOC —What is it?

We at CPC are involved up to our eyeballs in support of the Habitat for Humanity build right here in our hometown. You don't need to be reminded that we have been raising money, working at the site, mentoring a family, setting up and staffing booths at community events, helping to host the family orientations, planning to march in the Swallows Day Parade on March 29, etc.

Two of our own committee members, Jerry Elliott and Barbara Ward, are also heavily involved in the Presbyterian Partnership/Habitat for Humanity, Orange County. With a lot of help, a lot of phone calls, emails, personal contacts, and "snail mails," we have put together a group of representatives from about a dozen Presbyterian churches who are raising money and eagerly waiting their opportunities to participate in the building process which is scheduled to begin this summer.



Jerry Elliott



Barbara Ward

This fledgling partnership adopted a goal of raising \$250,000 for the construction of one Habitat home for a combat-wounded veteran, or a surviving military family. So far, we are almost halfway to our goal. We have made a pledge of \$120,000 to Habitat, and hope to increase that throughout the year.

It will be very helpful to our partnership, and to our own church, if you will continue to give any contributions you wish to make to Habitat through our church office. Mary Elliott received one nice contribution from a person not affiliated with our church, but who was willing for a gift to be processed through our church. Maybe you have such friends too!

FLASH NEWS UPDATE FROM THE HABITAT OFFICE! March 11: Grading (here in San Juan Capistrano) has started, retaining walls are complete. The first two building pads are almost to the final grade.

Grading will continue for the next several weeks. Underground utilities will begin after grading completes.



To our church family,

We are getting a great response to the "Moment for Per Capita" presentation on Sunday, March 2. Thank you for your quick response! The information below is provided for those who were unable to be with us that Sunday.

Per Capita Apportionment for 2008 is \$22.14 per person.

The Per Capita Apportionment goes toward the budgets of these entities:

- \$5.79 to PCUSA General Assembly
- \$2.60 Synod
- \$13.75 Presbytery of Los Ranchos

Our 2008 Per Capita is based on 235 CPC members as of December 31, 2006. CPC total to pay to Presbytery of Los Ranchos in 2008 is \$5,048.



When each of us pays the Per Capita Apportionment, it saves our pledged monies for the operation of our church. Any money not collected for our \$5,048 bill will be paid out of our pledged monies.

There are blue envelopes in the pledge boxes and white "per capita" envelopes in the pews. Please use one of these envelopes for your Per Capita check.

Thank you for sharing in our responsibility toward our Per Capita Apportionment.

Marge J. Ball
Stewardship Committee Chairman

Community Presbyterian Church
San Juan Capistrano
(949)493-1502
office@sjcpres.org

Save the Date - Presbyterian Women in the Presbytery of Los Ranchos
Spring Gathering - Saturday, May 3, 2008; 9:30 – 1:00
Yorba Linda Presbyterian Church

Donna Mroz, guest speaker

The Grapevine Outreach is a passionate expression of Donna Mroz's efforts to help women and children affected by domestic abuse. Committed to help others break free from this cycle of abuse, she established the Grapevine Outreach over a decade ago. Come hear her story! Her website is Grapevineoutreach.org

Registration flyers will be available at the April Circle meetings or call Marilyn Johnson 498.2231



Community Presbyterian Church —April Activities

- Thursday April 2, 7:30 am – Men’s Breakfast (Denny’s Ortega Hwy)
8:00 am – Women’s Breakfast (Jolly Roger, Dana Point Harbor)
6:30 pm – Grief Support Next Step [Narthex]
- Saturday April 5, 8:00 am – Fellowship Breakfast and study [Fellowship Hall]
- Saturday April 12, 8:00 am – Fellowship Breakfast and study [Fellowship Hall]
- Thursday April 17, 7:30 am – Men’s Breakfast (Denny’s Ortega Hwy)
- Saturday April 26, 8:00 am – Fellowship Breakfast and study [Fellowship Hall]
- Saturday May 3, 9:30 am – Presbyterian Women Spring Gathering (see page 9)
- Saturday May 10, 11:00 am – Presbyterian Women Luncheon and Fashion Show (see page 5)

Presbyterian Women -

- Ø **Bible Study - Above and Beyond – Hearing God’s Call in Jonah and Ruth. Pastor Morgan will lead the Bible Study Preview (for Chapter 8) on Wednesday, March 5, 2008 from 10:00 – 11:00 in the CE Room.**

Lydia Circle meets Wednesday, April 9, 10:00 at the church. Call Colleen Emery for details 496.7521 – cemery@cox.net

Martha Circle meets Thursday, April 10, 9:30 at the church – CE Room. Call Val Jessen for details 495.0350 – jessen23@cox.net

Mary-Deborah Circle meets Tuesday, April 8 at 7:00 PM. Contact Nancy Powers for location 495.4262 – forpowers@cox.net

- Ø **The PW Quiltmakers** will meet on Thursday, April 3 after breakfast, and April 17 at 9:00 am. Call Marilyn Johnson for details 498.2231 – mj1626@aol.com

The PW Book Club meets Tues, April 22, at 7:00 PM at the home of Veronica Murray, 218.6074. Call for directions. The selection for discussion is **Can’t Wait to Get to Heaven** by Fannie Flagg



**APRIL
BIRTHDAYS**

03 Larry Collins
04 Thomas Forquer
04 Lorie Porter
06 Sarah Frazee
07 Celia Estrada
08 Susan Howit
08 Sally Young
08 Sue Zodnik
09 Morgan Howit
10 Adam White
11 Ann Krieger
12 Kindra Larson
12 Andrew Sheaffer
14 Kathy Clark

15 Josephine Arklin
15 Amy Gilson
15 Nicole Hourian
16 Virginia Bigger
17 Nancy Powers
17 Rachel Reid
18 Kelly Krieger
18 Sue Stebbins
24 Bill Beverly
24 Julie Boyd
24 Diarmid Flatley
27 Shirley Harris
27 Leona Sims
29 Tyler Noble
29 Daryl Swander
30 Jaime Rios, Sr.



**APRIL
ANNIVERSARIES**

16 Don and Pat Mueller
22 Coke and Josie Kohr
22 Don and Karen Seapy



Community Presbyterian Church
32202 Del Obispo Street
Dana Point, CA 92675